



This Online Webinar is organized by Scholar IT Solutions

- **Scholar IT is IT Solutions provider Scholar IT is a group of Professionals with Technical and Domain Expertise and now an experienced and robust team of efficient people are serving its clients(entire USA) It is one of the best company in US.**
- **You can follow Scholar IT social network like website, Facebook page and LinkedIn page.**

SharePoint Administration



www.scholaritinc.com



Pleasanton, CA, USA

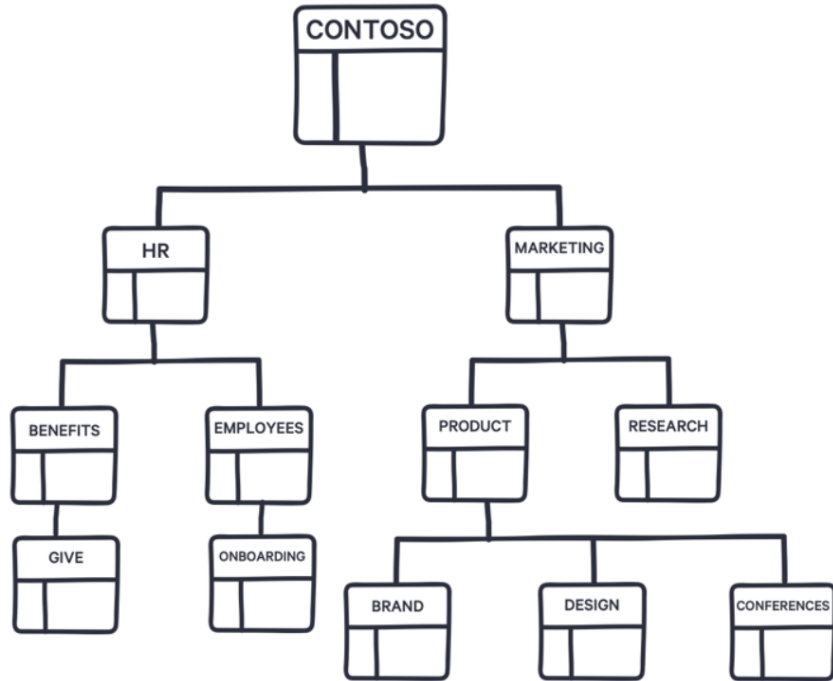
For More Information Please Contact



+1 (925) 999-0678

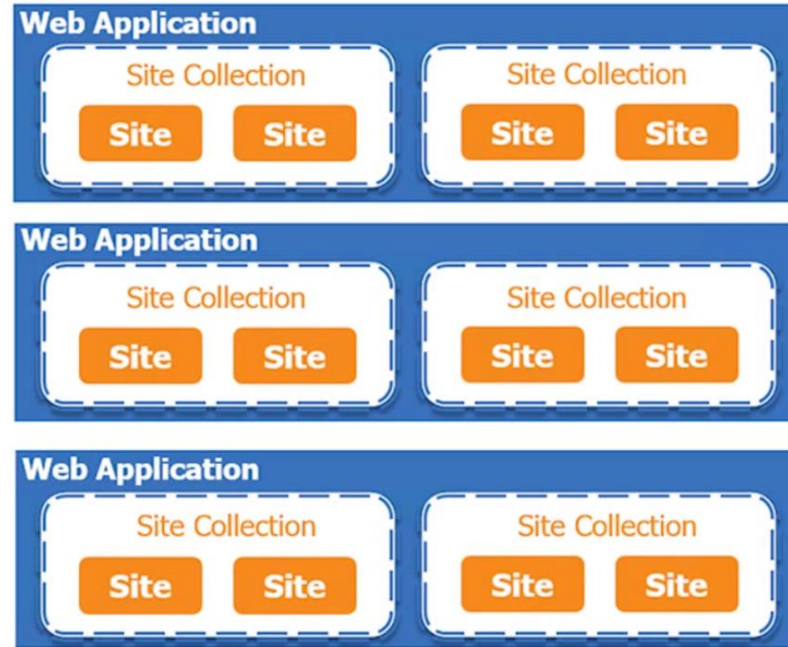


@ steve@micronetgroup.com

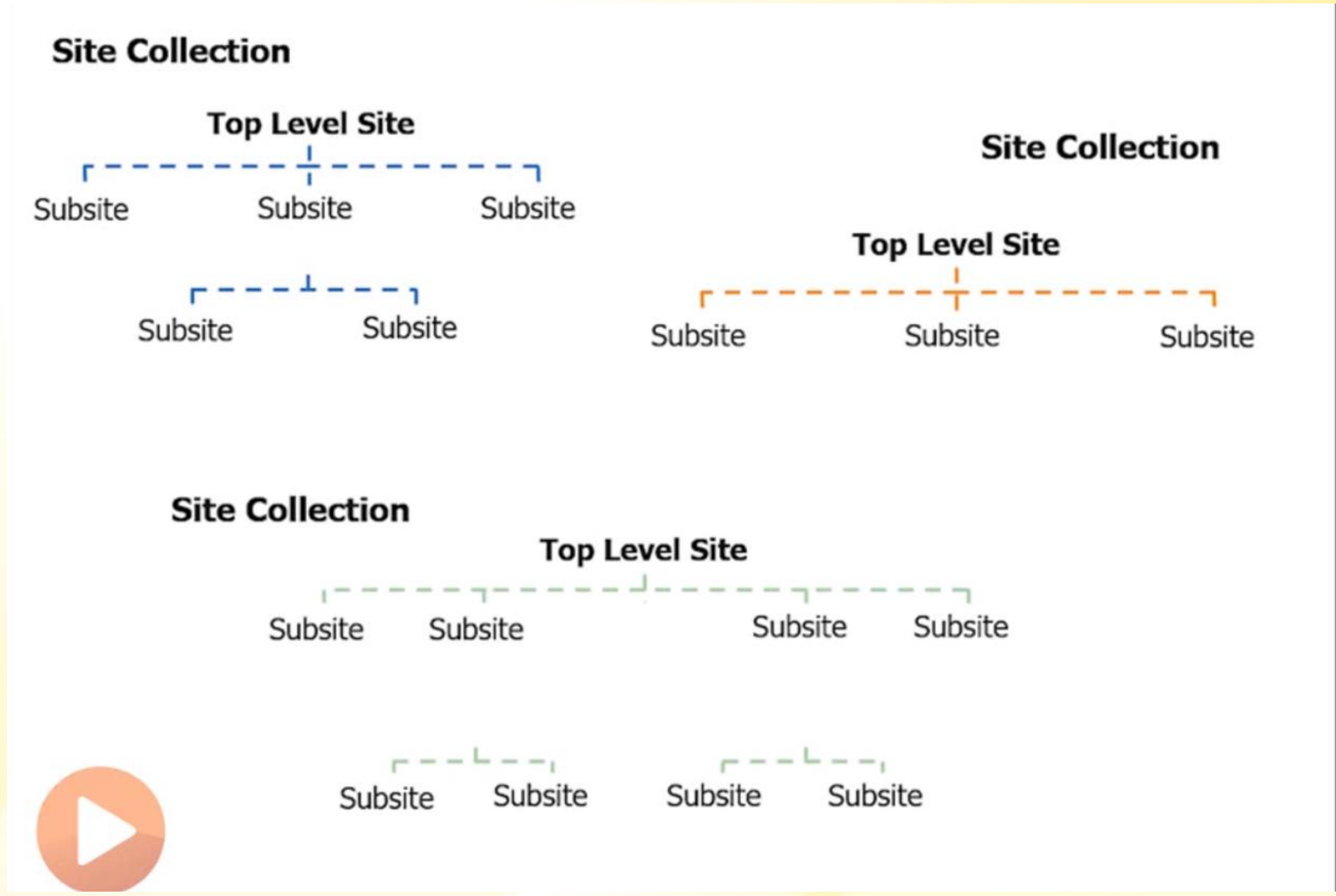


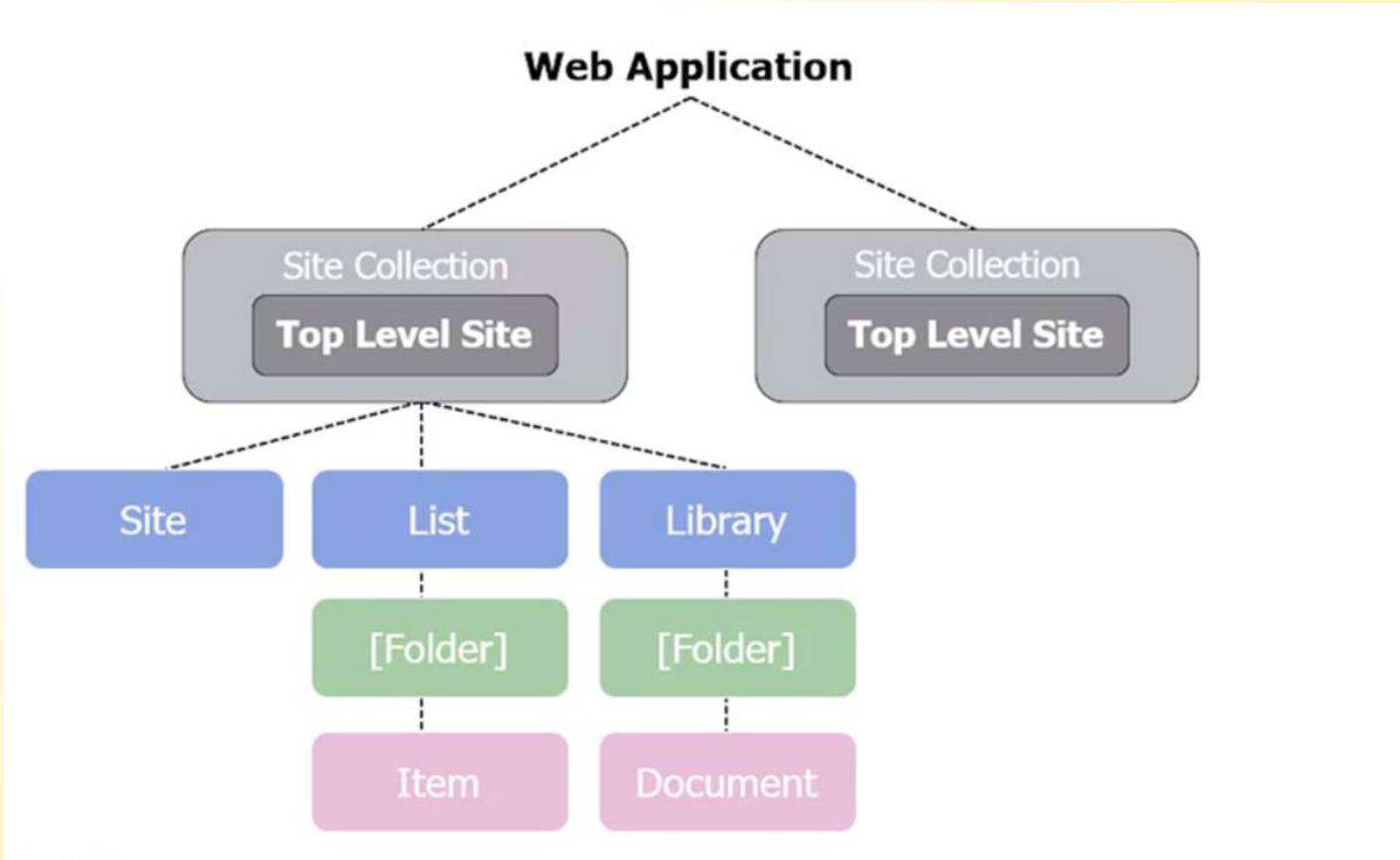
Logical Structure of SharePoint

Farm



Factors	SharePoint On-premise	SharePoint Online
Resource Requirement	More Hardware, More IT professionals to manage Servers and Services	No Hardware required, Less IT professionals required to manage data online
Storage	Physical Servers (The SharePoint server farm is within the corporate network.)	Cloud Servers (The SharePoint sites reside in the Microsoft Data Centre (MDC).)
Updates & installation	Manually needs to updates patches periodically	Taken care by Microsoft as per requirement of the user.
Cost Involved	Purchase/Maintain Hardware, Software licenses etc.	Annual subscriptions for Office 365 Plans billed on a per user basis.
Range of functions	New tools are made available at a later date	Ported initially by MS to the online version
Backup	Company need to create backups by own	Microsoft ensures backup and redundancy
Management	Central Administration and Power Shell manages the On-premises environment.	SharePoint Admin Center and Power Shell manages the On-premises environment.
Availability	Company is in charge of availability	SLA with 99.9% availability
Information Security	Dependent on internal capabilities.	Information in MDS meets industry-specific security standards
Storage needs	Expensive storage devices, Site Collection -More than 100GB, Scalable Storage Size	Cheap storage cost, Site Collection- up to 100Gb, Maximum content in single tenant -O365 plan based
Speed	Speed of SharePoint is dictated by local infrastructure.	Global network of data centers provided lower latency and high bandwidth.





FEATURE COMPARISON		
Feature	Team Site	Communication Site
Who creates the site?	Site Owner (or Admins)	Site Owner (or Admins)
Who creates content?	All members are content authors who jointly create and edit content.	Small number of content authors and a much larger number of content readers or consumers.
Security	Microsoft 365 Groups	SharePoint Groups
Default Setting for External Sharing	External Sharing Enabled (but can be disabled by the SharePoint Admin)	External Sharing Disabled (but can be enabled by the SharePoint Admin)
Navigation	Left	Top
When you create, you ALSO get ...	Planner board, OneNote notebook, Email address for the group, Shared Calendar, shared mailbox, opportunity to connect with a Microsoft Team (if the site wasn't created as part of provisioning a Microsoft Teams)	NOTHING but a SharePoint communication site!



- 1.Site Level Permission
- 2.List Level Permission
- 3.Item Level Permission



